



> HYDRAULIC EXCELLENCE IN THE FISHING INDUSTRY

► SUPPLY SERVICE SYSTEMS

Orbital Motors - Low Speed High Torque Hydraulic Motors

Danfoss (Sauer-Danfoss) 'Orbital' type hydraulic motors operate on the principle of an internal gear rotating within a fixed external gear. The internal gear transmits the torque generated by the application of pressure from the hydraulic oil fed into the motor. This is then delivered via the motor's output shaft. Typical applications for these motors are winch drives, mixer drives, elevator drives, small vehicle transmissions & machine tools.



CONSTANT OPERATING TORQUE

Choosing the correct capacity of motor for your particular application will ensure an almost constant output torque across the operating speed range.

HIGH STARTING TORQUE

Torques from a stalled condition can be typically 80% of the equivalent running torque, ensuring good starting performance.

TWO BOLT SAE 'A' FLANGE MOUNTING

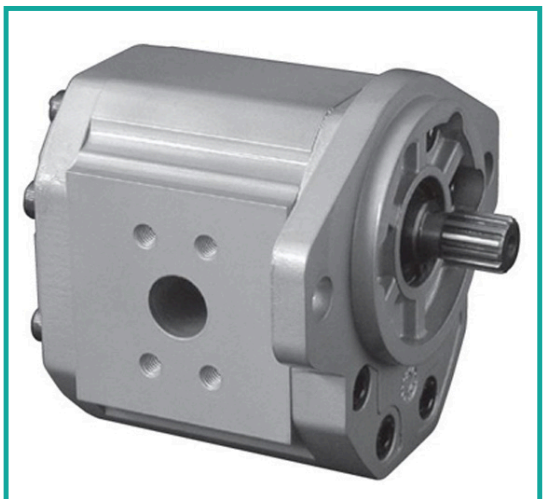
The standard mounting is the widely used SAE A two hole flange, but units are also available with the USA type 4 hole tapped flange.

HIGH PRESSURE SHAFT SEALS

High pressure shaft seals can allow units to be operated upstream of another function, without the need for additional seal drains.

Gear Pumps - Aluminium Fixed Displacement External Gear Pumps

Gear pumps use the meshing of gears to pump fluid by displacement. They are one of the most common types of pumps for hydraulic fluid power applications. Gear pumps are normally stated in group 1, 2 & 3 and have various options available, with flow rates from 0.25cc to 90cc per rev and working pressure up to 250bar, as well as speeds of up to 4000 rpm.



PRESSURE BALANCED BEARING BLOCK DESIGN

SNP-2 units all incorporate the use of gear shaft bearing blocks that also provide pressure balancing against the side face of the gears, so that the pressure produced by the pump actually compensates for the separating forces generated by the pump.

MULTIPLE VERSIONS AVAILABLE

Pumps can be coupled together to produce double or triple units. However, the largest series unit at the input stage must be capable of transmitting the total torque.

FOUR HOLE EUROPEAN OR SAE MOUNTS

Units are available with four hole 'European' mounting flanges plus a variety of spigots & output shafts. Alternatively units can be supplied with SAE mountings.

MOTOR DESIGNS AVAILABLE

All capacities of units are available as motors, please specify direction of rotation.

SUPPLY

The widest range of market leading products with many available ex-stock.

SERVICE

Outstanding in house and field based technical support teams offer assistance, product selection and application advice.

SYSTEMS

Extensive warehousing and stock control systems support on time deliveries.

Diverter Valves - Lever Operated Rotary Diverter Valves

Hy-Pro rotary diverter valves comprise of a steel spool rotating within a steel body. The position of the spool determines which flow path the oil can take & therefore, which direction of motion is required. Typical applications are where a manual input is needed to effect a rapid change in the direction of an actuator or flow function.

Hy-Pro
motion and control solutions



THREE OR FOUR PORTED VERSIONS

Diverter valves can be supplied as two position three port or three position four port.

FRICTIONAL HOLD FACILITY

Four port valves are detented in their centre condition, whereas three port units rely on friction to keep the handle in a desired position.

BSP PIPE LINE MOUNTING

Units are all supplied with BSP ports from 3/8" to 1/2".

Clutches - Both Mechanically Or Electrically Operated Pump & Motor Clutches

Operating the manual lever engages or disengages a gear drive that transmits torque to the hydraulic pump or hydraulic motor. Typical applications are when the hydraulic supply is only required for a short space of time, such as pump drives on fishing vessels or refuse skip hoists. The electrical control engages or disengages a friction clutch that transmits torque to the hydraulic pump or hydraulic motor. Typical applications are when the hydraulic supply is only required for a short space of time, such as pump drives on fishing vessels or refuse vehicles.



MANUAL OPERATION

Units are manually operated by handle control.

PARALLEL KEYED DRIVE SHAFTS

Clutches are supplied with parallel keyed input shafts.

HIGH RADIAL LOAD CAPACITY

Bearing package within the assembly provides for substantial side loads.

FOOT & FLANGE MOUNTINGS

Units can be front flange or foot mounted to suit.

OPERATING VOLTAGE TO 12V OR 24V DC

Operation is by 12v or 24v signal which should be activated in an 'off-load' condition.

FLANGE OR PULLEY INPUT SHAFTS

Clutches are supplied with flanged or pulley inputs to suit customers' requirements.

OUR PRODUCT RANGE INCLUDES:

Accumulators	Cylinders	Gauges	Pressure Gauges
Adaptors	Cylinder Repairs	Gearboxes	PTOs
Bellhousings	Diverter Valves	Hand Pumps	Pumps
Bonded Seals	Drive Couplings	Hose Assemblies	Quick Release Couplings
Cartridge Valves	Elements	Hydraulic Hose & Fittings	Seals & Seal Kits
Cetop Valves	Filler Breathers	Industrial Hose & Fittings	Solenoid Valves
Clutches	Filters	Lever Valves	Steel Tube
Compression Fittings	Flanges	Manifold Blocks	Suction Elements
Control Valves	Flow Meters	Motors	Test Equipment
Coolers	Fluid Analysis	Power Units	Tube Clamping

From motors to hose, from oil to pumps, when it comes to hydraulics - if you need it we've got it! Hydraulic Equipment Supermarkets supply and distribute the widest range of branded fluid power components and systems, across all industries and applications. Our employees are empowered to deliver a hassle-free experience from enquiry to delivery. We enjoy an independent, family-run feel where we put the needs and expectations of our customers above all else.

Official Distributors

We are proud of our numerous relationships with leading engineering manufacturers, some for over 50 years. In 2012, we were selected as a Tier One Partner for Danfoss Power Solutions, a relationship that has been going strong for nearly 40 years. Other official distributorships include Parker, Duplomatic, Turolla, Comatrol, Intertraco, Hallite, Hy-Pro, Webtec and many more!

Easy-To-Buy Hydraulic Products

Providing an over-the-counter, telephone, email and online ordering service, we supply hydraulic components from leading global brands. Our knowledge and excellence in engineering, underpinned by advanced software and extensive stockholding is what sets us apart. This extensive stockholding means we deliver end-user solutions faster and more cost effectively. We get the parts into the hands of engineers when they are needed, minimising equipment downtime.

A Nationwide Reach

We offer nationwide coverage with branches in Gloucester, Birmingham, Durham and Leeds, each with a trade counter to supply local businesses with products and technical support. We carry extensive stocks with over 80,000 active parts and products, which are available for next day delivery or same day collection.

Hydraulic Equipment Supermarkets Gloucester

Dowco House
Innsworth Technology Park
Innsworth Lane
Gloucester, GL3 1DL

T 01452 730774
F 01452 731637
E gloucester@grouphes.com

Hydraulic Equipment Supermarkets Birmingham

Unit 3 Cheston Road
Aston
Birmingham
B7 5EA

T 0121 327 2664
F 0121 322 2488
E birmingham@grouphes.com

Hydraulic Equipment Supermarkets Durham

Unit 7A Drum Industrial Estate
Chester-Le-Street
County Durham
DH2 1AG

T 0191 410 6619
F 0191 411 1055
E durham@grouphes.com

Hydraulic Equipment Supermarkets Leeds

Unit 6A
Millshaw Park Industrial Estate
Leeds
LS11 0LW

T 0113 270 7295
F 0113 270 3213
E leeds@grouphes.com