

# SV80 Series

## Diverter Valve



Milwaukee, WI 53235, USA  
Tel: +1 (414) 769-6400  
sales-us@webtec.com

St. Ives, Cambs. PE27 3LZ, UK  
Tel: +44 (0) 1480 397 400  
sales-uk@webtec.com

[www.webtec.com](http://www.webtec.com)

A **Diverter Valve** provides an alternative to the standard directional control valve when a neutral (centre) position is not required. It allows flow to be directed into either of two lines which enables fast changing from one system to another, or from one system to tank thus providing an idling circuit.

Other applications may be as a safety lock preventing accidental operation of separate functions which should not operate together and the selection of attachments as on a farm tractor.

### Specifications

**Maximum Working Pressure:**  
210 bar

**Maximum Flow:**  
80 lpm

**Porting:**  
See Table 2, ordering codes

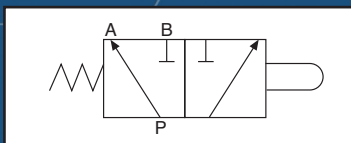
**Material:**  
Stainless steel spool in cast iron body

**Weight:**  
2 kg (approx.)

**Mounting:**  
Two bolt

**Symbol**  
For valve model number SV80-A-J-S (see ordering codes)

### Symbol

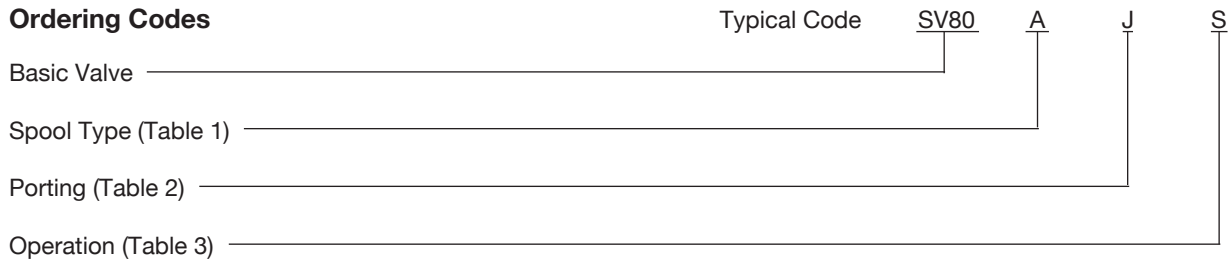


### Features

- Flow may be directed by mechanically pushing the spool with spring offset or by a mechanical push pull operation in which case the valve stem is threaded or fitted with a moulded knob.
- Customer can select from one of two spool types allowing flow to be diverted from one line to another or from system to tank.
- A choice of port threads are available.
- Special versions also available.



## Ordering Codes



**Table 1: Spool Type**

Code	Spool Type
A	
B	

**Table 2: Porting**

Code	Porting
J	1/2" BSPP
G	7/8" -14UN #10 SAE ORB
M	M22 x 1.5
A	1/2" NPTF

**Table 3: Operation**

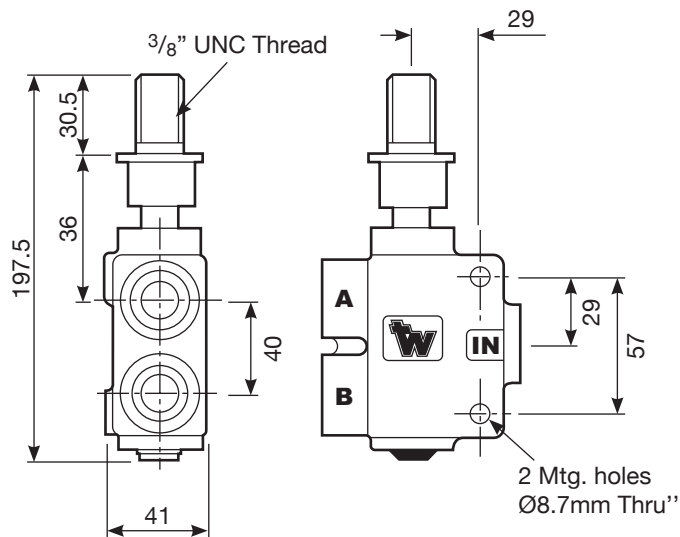
Code	Operation
S	Spring Offset, Mechanical Push
M	Manual, Push - Pull
T	Threaded, Push - Pull

## Installation Details

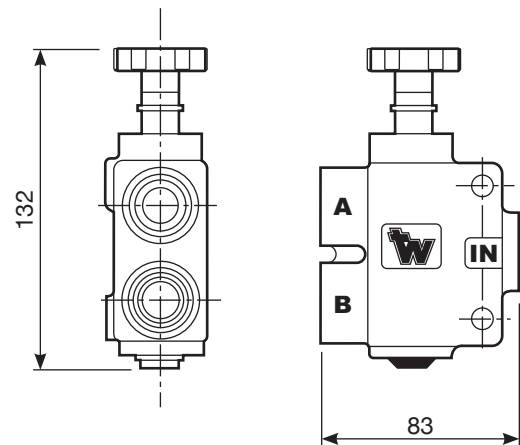
Dimensions in millimetres

'A' Spool - Inlet to Port 'A' in position shown below  
 'B' Spool - All Ports closed in position shown below

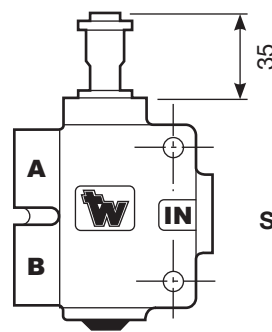
### Threaded Push, Pull Type



### Manual Push, Pull Type



Spool Movement 11 mm



Spring Offset Type