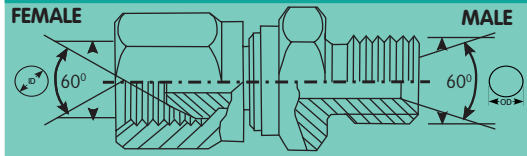
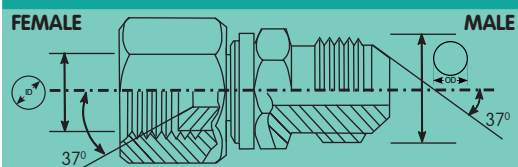


BSP (BSP Parallel) 60° cone



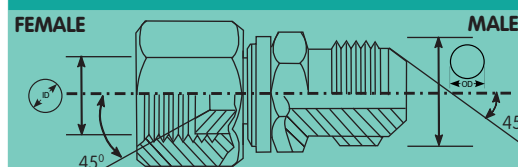
Dash	BSP - TPI	mm	Inch	mm	Inch
-02	1/8" - 28	09.6	0.378	8.8	0.346
-04	1/4" - 19	13.0	0.512	11.7	0.461
-06	3/8" - 19	16.5	0.650	15.2	0.598
-08	1/2" - 14	20.8	0.819	18.9	0.744
-10	5/8" - 14	22.8	0.898	20.9	0.823
-12	3/4" - 14	26.3	1.035	24.4	0.961
-16	1" - 11	33.1	1.303	30.6	1.205
-20	1.1/4" - 11	41.8	1.646	39.3	1.547
-24	1.1/2" - 11	47.7	1.878	45.2	1.780
-32	2" - 11	59.4	2.339	57.5	2.264
-40	2.1/2" - 11	75.2	2.960	72.2	2.843
-48	3" - 11	87.9	3.460	84.9	3.343

JIC 37° Cone Flare



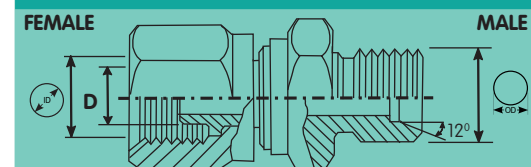
Dash	Inch - TPI	mm	Inch	mm	Inch
-03	3/8" - 24	09.5	0.374	08.3	0.327
-04	7/16" - 20	11.0	0.433	09.9	0.390
-05	1/2" - 20	12.5	0.492	11.5	0.453
-06	9/16" - 18	14.1	0.555	12.9	0.508
-08	3/4" - 16	18.9	0.744	17.5	0.689
-10	7/8" - 14	22.1	0.870	20.5	0.807
-12	1.1/16" - 12	26.9	1.059	25.0	0.984
-14	1.3/16" - 12	30.0	1.181	28.2	1.110
-16	1.5/16" - 12	33.2	1.307	31.3	1.232
-20	1.5/8" - 12	41.2	1.622	39.2	1.543
-24	1.7/8" - 12	47.5	1.870	45.5	1.791
-32	2.1/2" - 12	63.3	2.492	61.4	2.417

SAE 45° Flare - SAE J512



Dash	Inch - TPI	mm	Inch	mm	Inch
-05	5/16" - 24	07.9	0.311	06.8	0.268
-06	3/8" - 24	09.5	0.374	08.4	0.331
-07	7/16" - 20	11.1	0.437	09.9	0.390
-08	1/2" - 20	12.7	0.500	11.4	0.449
-10	5/8" - 18	15.9	0.626	14.2	0.559
-12	3/4" - 16	19.1	0.752	17.5	0.689
-14	7/8" - 14	22.2	0.874	20.6	0.811
-17	1.1/16" - 14	27.0	1.063	24.9	0.980

DIN 24° Cone



Dash	Light Series	Heavy Series			
Dash	x Pitch	mm	mm	mm	mm
-1215	M12 x 1.5	10.5	07.5	-	-
-1415	M14 x 1.5	12.5	09.5	12.5	07.5
-1615	M16 x 1.5	14.5	11.5	14.5	11.5
-1815	M18 x 1.5	16.5	14.0	16.5	12.0
-2015	M20 x 1.5	-	-	18.5	14.0
-2215	M22 x 1.5	20.5	17.0	20.5	16.0
-2415	M24 x 1.5	-	-	22.5	18.0
-2615	M26 x 1.5	24.5	20.0	-	-
-3020	M30 x 2.0	28.0	24.5	28.0	22.5
-3620	M36 x 2.0	34.0	30.5	34.0	27.5
-4220	M42 x 2.0	-	-	40.0	33.0
-4520	M45 x 2.0	43.0	38.0	-	-
-5220	M52 x 2.0	50.0	45.0	50.0	41.0

BSPT



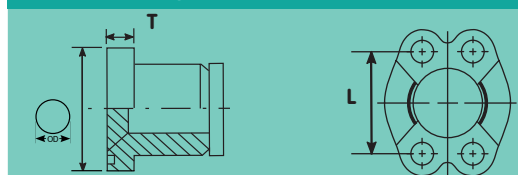
Dash	BSP - TPI	mm	Inch	mm	Inch
-02	1/8" - 28	09.5	0.374	08.4	0.331
-04	1/4" - 19	12.8	0.504	11.2	0.441
-06	3/8" - 19	16.3	0.642	14.7	0.579
-08	1/2" - 14	20.4	0.803	18.3	0.721
-10	5/8" - 14	22.5	0.886	20.6	0.811
-12	3/4" - 14	25.9	1.020	23.9	0.941
-16	1" - 11	32.6	1.283	29.7	1.169
-20	1.1/4" - 11	41.1	1.618	38.6	1.520
-24	1.1/2" - 11	47.0	1.850	44.5	1.752
-32	2" - 11	58.6	2.307	56.4	2.220
-40	2.1/2" - 11	74.1	2.917	71.9	2.831
-48	3" - 11	86.6	3.409	84.6	3.331

NPT



Dash	BSP - TPI	mm	Inch	mm	Inch
-02	1/8" - 27	09.9	0.390	8.4	0.331
-04	1/4" - 18	13.2	0.520	11.2	0.441
-06	3/8" - 18	16.6	0.654	14.7	0.579
-08	1/2" - 14	20.6	0.811	17.8	0.700
-	-	-	-	-	-
-12	3/4" - 14	26.0	1.024	23.4	0.921
-16	1" - 11.1/2	32.5	1.280	29.5	1.161
-20	1.1/4" - 11.1/2	41.2	1.622	38.1	1.500
-24	1.1/2" - 11.1/2	47.3	1.862	43.9	1.728
-32	2" - 11.1/2	59.3	2.335	56.4	2.220
-40	2.1/2" - 8	71.5	2.815	69.1	2.720
-48	3" - 8	87.3	3.437	84.8	3.339

SAE Flange (Code 61 - 62)



Dash	Nominal Size	mm	Inch	mm	Inch	mm	Inch
------	--------------	----	------	----	------	----	------

3000 PSI (Code 61 Type)

-08	1/2"	30.2	1.189	6.8	0.268	31.8	1.252
-12	3/4"	38.1	1.500	6.8	0.268	47.6	1.874
-16	1"	44.5	1.751	8.0	0.315	52.3	2.059
-20	1.1/4"	50.8	2.000	8.0	0.315	58.7	2.311
-24	1.1/2"	60.3	2.374	8.0	0.315	69.8	2.748
-32	2"	71.4	2.811	9.6	0.378	77.7	3.059

6000 PSI (Code 62 Type)

-08	1/2"	31.8	1.252	7.8	0.307	40.5	1.594
-12	3/4"	41.3	1.626	8.8	0.346	50.0	1.969
-16	1"	47.6	1.874	9.5	0.374	57.1	2.248
-20	1.1/4"	54.0	2.126	10.3	0.406	66.7	2.626
-24	1.1/2"	63.5	2.500	12.6	0.496	79.4	3.126
-32	2"	79.4	3.126	12.6	0.496	96.8	3.811

Thread Identification Chart

This chart identifies some of the most popular types of fittings.

Technical support is available from any of our branches across the UK. Get in contact with:

- Gloucester** - T 01452 730774
E gloucester@grouphes.com
- Birmingham** - T 0121 327 2664
E birmingham@grouphes.com
- Durham** - T 0191 410 6619
E durham@grouphes.com
- Leeds** - T 0113 270 7295
E leeds@grouphes.com



Visit our website at <http://hes.grouphes.com>